

Other "Sites" to Behold

The **Vaughan/Blair Stagecoach House** in nearby Simpson is located approximately 3-1/2 miles west of Ridgeway off Highway 34 on Barber Road. Once used as a stagecoach stop in the early 1800's, it has recently been renovated. **Almwell Presbyterian Church**, located in Ridgeway on Means Street, was established in 1790. The current building was built in 1885. **Lebanon Presbyterian Church**, located just outside Ridgeway on Highway 34 east is the site of the first parochial school for African-Americans in the county. **Ruff's Chapel**, off Palmer Street, was built in 1873 by David Ruff for the Methodists in the area. **St. Stephen's Episcopal Church** was founded in 1839 and the current building built in 1854. Be sure to see this lovely unique church on Church Street just beyond the town limits.

Please respect the privacy of the owners by viewing these homes from the road.

Valencia, located about 2 miles northwest of Ridgeway on Valencia Road was built in 1834 by Edward Gendron Palmer. **Cedar Tree** on Van Exem Road, off Highway 34 west about 2 miles from Ridgeway, was built in 1853 and was the home of the first female to be elected to Congress, Mrs. Elizabeth Van Exem. *Please contact owner before viewing.* **Mount Hope**, located off Highway 34 west, two miles outside of Ridgeway, was built around 1837 and was the site of one of the earliest schools in the county. **Hunter House**, approximately 1.7 miles from Ridgeway on Longtown Road, was built around 1820. After the Civil War, Mr. Hunter moved to the British Honduras rather than live in the Union-ruled South. **Blink Bonnie**, 8 miles from Hunter House, also on Longtown Road was built in 1822 by a Camden banker, Darling Jones.

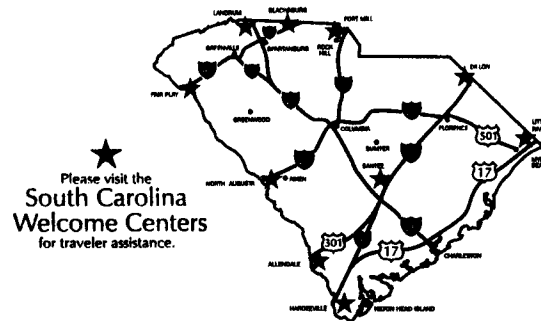
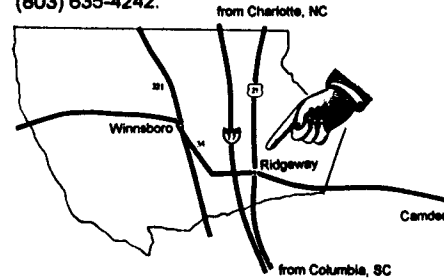
PRINTED IN THE USA 9/98 10M

How to Get Here

To get to our tour's starting point from Charlotte, N.C., take I-77 south to Exit 34, turn left and follow Highway 34 Business into town. Turn left at the stop light and the first house on the left is ① on our tour.

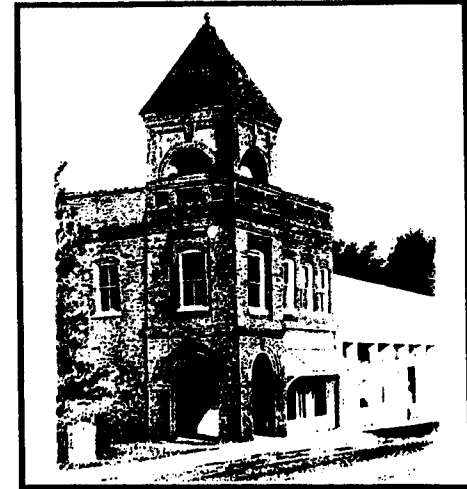
From Columbia, S.C, take I-77 north to Exit 34, turn right and follow Highway 34 Business into town. Turn left at the stop light and the first house on the left is ① on our tour.

For further information, please contact the Ridgeway Town Offices at (803) 337-2213 or the Fairfield County Chamber of Commerce at (803) 635-4242.



South Carolina
Smiling Faces. Beautiful Places.™

Walking Tour of Historic Ridgeway, South Carolina



Welcome to our
Town





Originally known as New Town, Ridgeway obtained its present name when the owners of the Charlotte and South Carolina Railway decided not build the railroad on the Camden route, but rather to use the "ridge way".

The earliest settlers of the Ridgeway area came south in the late 1700's from Virginia after the Revolutionary War. Others came north from Charleston in the early 1800's to escape malaria.

① In 1904, the grandfather of the present owner built this home, the D. W. Ruff house. Local stories recount how one architect was so impressed with the floor plan of this home that he stole the design to build another home in Ridgeway, the J. Spann Edwards house. *As with all the homes on this tour, please enjoy this beauty from the sidewalk.*



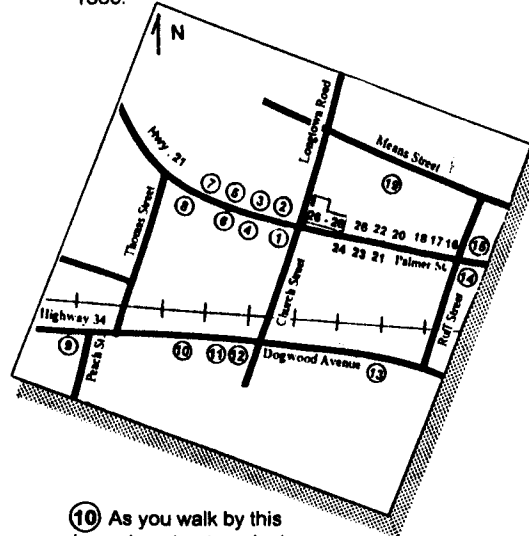
② Constructed in 1906 by Robert Charleton Thomas, this beautiful Victorian home has been lovingly restored by Mr. & Mrs. Robert F. Clyburn. Be sure to

note the mounting block in the corner of the front yard. This large block of granite allowed young ladies to step delicately into their awaiting carriages. ③ W. Herbert Ruff house, built around 1910. ④ Earle Hooten House, 1911.

⑤ Built around 1895 by Reid H. Brown, this one-story Queen Anne house is one of the oldest homes on this street. Imagine its delicate beauty surrounded by clouds of azalea, dogwood, and



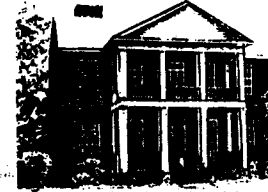
redbud blossoms with a canopy of wisteria hanging above. This fairyland scene attracted many travelers each spring. ⑥ Traylor House, 1918. ⑦ J. Spann Edmunds House, 1906. ⑧ Augustus Tally Moore built this home in 1899. His young son was so distressed at seeing a local crippled man that he swore to repair his foot one day. A.T. Moore, Jr. grew up to become a fine doctor, perfecting and patenting the first artificial hip socket. And yes, the first surgery he performed was to repair that crippled foot. ⑨ Monroe Wilson home, built around 1850.



⑩ As you walk by this imposing structure, look carefully at the attic windows and you may see Charles Wray who built this home in 1910. Local legend says he still stands there, staring down the railroad tracks, searching for his wife and child who were killed with



him in a tragic train accident. ⑪ The Rosborough House, said to be the oldest home in Ridgeway, was built in the early 1800's and moved to its present site in 1979. It is now owned by Mrs. Robert W. Thomas. ⑫ Isaac C. Thomas House, built in 1885 by the founder of The Thomas Company, is now the home of Mrs. Robert W. Thomas.



⑬ The Century House, 1856. During the Civil War, Union soldiers on the way from burning Columbia stopped here and demanded to see the owner. James B. Coleman was gravely ill at the time, but his wife, Ascenith met with the commander of the troop. When she asked for his protection, he graciously assented and the house was spared. ⑭ Dr. James W. Team House, 1905. ⑮ Originally a single-story home when built in 1904, Mrs. W. B. Kennedy added the second story after receiving an inheritance from her father which stipulated she spend the entire amount at one time. ⑯ Railroad House, 1900.



Business District 17 - 28

Drop in and chat with the proprietors of these stores. While you're there, warm yourself by the fire or cool off with a soft drink. And, be sure to feel free to ask any questions you may have about Ridgeway. We hope you enjoy the hospitality of our little town.

⑰ Charlotte and South Carolina Railroad House, 1890. ⑱ James W. Team Drugstore, 1925. ⑲ Ruff's Gin House, 1947. ⑳ Ruff & Company, 1901. ㉑ Old Town Hall, 1904. ㉒ Ruff's Old Store, 1840. ㉓ Johnson Building, 1908. ㉔ Ruff Furniture Store, 1900. ㉕ Dobson's Drugstore, 1925. ㉖ The Thomas Company Store, 1880. ㉗ The Thomas Company Store, 1911. ㉘ Thomas's Old Store, 1875.